

Bugs and Flies Spotter Sheet



True bugs are so called to help distinguish them from the generic term 'bugs'. They are different from beetles as they have piercing mouthparts, long, segmented antennae, hardened forewings and wing covers that overlap. Groups of true bugs include Squash Bugs, Ground bugs, Leafhoppers and Aphids, to name a few examples.

Diptera is the group name for flies and is one of the major insect groups. The name Diptera, alludes to the fact that flies have two wings (1 pair of wings). Like bugs they have sucking or piercing mouthparts and feed on liquid. Examples include hoverflies, craneflies, house flies and mosquitos.

These insects can be found in most habitats such as grasslands, woodlands, hedgerows and coastal areas, on plants. Some bugs are also found in leaf litter and under bark/rocks. This spotter sheet includes some of the easier species to identify. It would be great to have more records and you can submit these through the biological recording app, iRecord.

Dock Bug



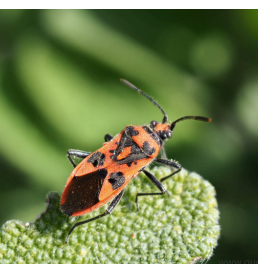
Large squashbug. Red-brown with broad, oval abdomen. Dark wing membranes 13-15mm

Western Conifer Seed Bug



Large with white zig-zag across centre. Dark brown diamond at rear. Flattened hind legs 20mm

Cinnamon Bug



Similar to Fire Bug. Very hairy. Red with black markings. 9mm

Fire Bug



Similar to Cinnamon Bug. Recent introduction. Red with black markings 8.5-10mm

Green Leafhopper



Large leafhopper. Yellow and green with dark spots on nose. Females green wings, males dark blue-purple wings 6-8mm

Common Froghopper



Tiny. Patterned black, white or brown. Can be very variable. 5-7mm

Cuckoo Spit



Common Froghopper larvae can be found in 'cuckoo spit', bubbles which protect them from predators.

Rhododendron Leafhopper



Green and red with yellow head and black stripe across face. Mainly found on Rhododendron. 8-10mm



Yellow-faced Fly



Large. Black body with yellow-buff head. Covered in bristles. Dark brown eyes. 15-20mm



Noon Fly



Large. Jet black with orange-gold on base of wings, feet and on its face 11-12mm

Marmalade Hoverfly



Orange with thick and thin black bands across body. Brown eyes. 9-12mm

Dark-edged Bee-fly



Tawny brown with dark edge to front of wings. Long tongue and legs. 6-12mm

If you find a species not included on this sheet, take a photo and ask for advice on the Guernsey Wildlife or Insects of the Channel Islands Facebook pages.

Photo credits Andy Marquis